



FOR IMMEDIATE RELEASE

Contact:

Memory Tracy,
xACSIA Partners Insurance Agency
memory.tracy@acsiapartners.com
800-576-2465

Leading Long-Term Care Insurance Agency Doubles Worksite Sales

Their secret? Highlighting Productivity Benefits and Providing a Custom Outreach and Education Program for Each Employer, According to Specialist Memory Tracy of xACSIA Partners Insurance Agency

Goleta, CA January 28, 2014 – xACSIA Partners Insurance Agency, one of America's largest long-term care insurance agencies, reports 2014 sales of approximately \$5,000,000 for its Worksite Division, up 100% from 2013. "Double in just one year! For us, that's huge," says Memory Tracy, an expert in long-term care planning who is a CA-based agent of xACSIA Partners Insurance Agency.

"What's more, we expect another 100% jump this year, and we're just getting started," Tracy adds.

Long-term care (LTC) insurance is starting to catch on as an employee benefit for good reason, according to Tracy. "Employees appreciate it, but there's a bottom-line value for the organization: increased productivity." Tracy explains that more than 50% of America's caregivers are full-time employees. "When there's no insurance to pay for care, employed family members pitch in, and their focus on work can take a nosedive."

When the correlation between LTC education and higher productivity is pointed out, "management takes notice," says Tracy. Then the company implements a long-term care planning program for employees. ACSIA Partners supplies a range of resources including educational literature, an online care-support network, and free in-home evaluations for any family member from the largest in-home healthcare provider in the country.

"The spouses and extended family members of employees receive the same valuable education and then start planning for their long-term care, so they don't become a burden to the employees," says Tracy.

xACSIA Partners Insurance Agency' worksite revenue currently accounts for a minority of overall revenue. The balance is from sales to consumers through field agents. Might consumer sales also surge in response to a positive, results-oriented appeal? Tracy thinks so.

"Our most productive agents already use this approach with consumers," Tracy says. "They don't dwell on LTC risks and needs. They acknowledge negatives but focus mostly on positives. How the insurance can help maximize effectiveness, reach life goals, realize retirement dreams, and strengthen family values."

xACSIA Partners Insurance Agency' top-producing agents in 2014 were also top producers for major LTC insurance carriers.

At the company's annual conference -- January 16-18 in Atlanta -- a campaign was launched to help all 400-plus agents adopt the practices of the top producers.

The keynote speaker was Harley Gordon, President of The Corporation for Long-Term Care Certification, Inc. (CLTC). He suggested that the traditional message that's used to motivate people to purchase long-term care insurance is misguided.

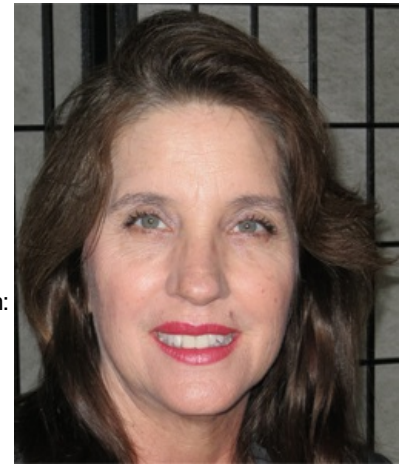
"It's based on the presumption that people want to be educated about the risks and costs of care as they age," he said. "The reality is that no one is interested because no one wants to believe that decrepitude, dependency, senility and helplessness lie ahead, particularly men."

Such thoughts only invite cognitive dissonance because they contradict Americans' bold, hunter-gatherer instincts, which include providing for one's spouse and children.

The way to appeal to can-do Americans, he explained, is to be in sync with their inner drives and essential directives. "For example," said Gordon, "to show how LTC planning can help them protect their kids from having to set their lives aside to care for them."

Currently only about 10% of Americans who could benefit from long-term care insurance have it, according to industry estimates. Could the stumbling block be cognitive dissonance based on misguided marketing?

"Could be," says Tracy. "In 2015 I wouldn't be surprised if our sales double for our consumer business and double again for worksite."



Memory Tracy is a leading long-term care solutions agent in CA, serving consumers as well as organizations. “We’re glad to help them find the best, most affordable solution for their situation,” Tracy says. “In addition to long-term care insurance, today’s options range from critical illness insurance and annuities to life insurance with LTC riders.”

Information is available from Tracy at memory.tracy@acsiapartners.com, <http://MemoryTracy.acsiapartners.com> or [800-576-2465](tel:800-576-2465).

In California the company is known as xACSIA Partners Insurance Agency; in other states, as ACSIA Partners.

###